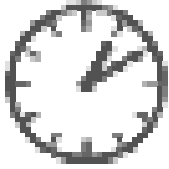
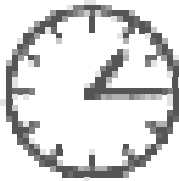


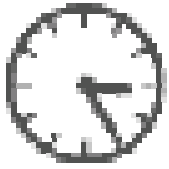
Il est huit heures moins vingt-cinq.



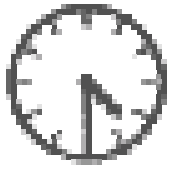
Il est une heure dix.



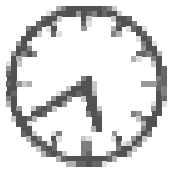
Il est une heure et quart.



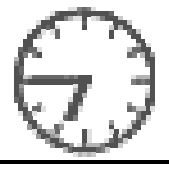
Il est trois heures vingt-cinq.



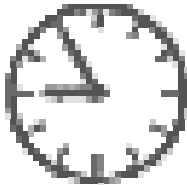
Il est quatre heures et demie.



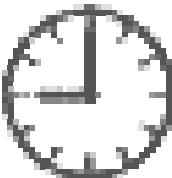
Il est six heures moins vingt.



Il est sept heures moins le quart.

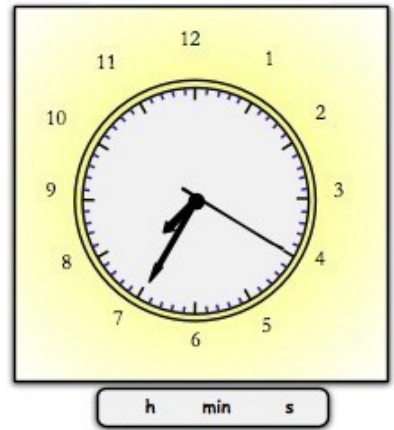
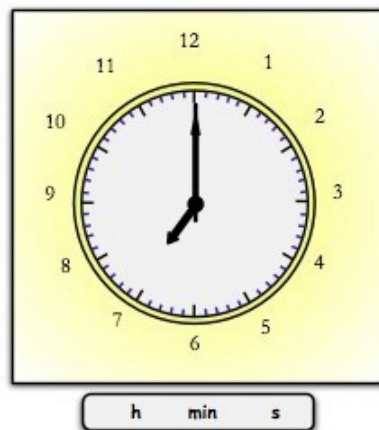
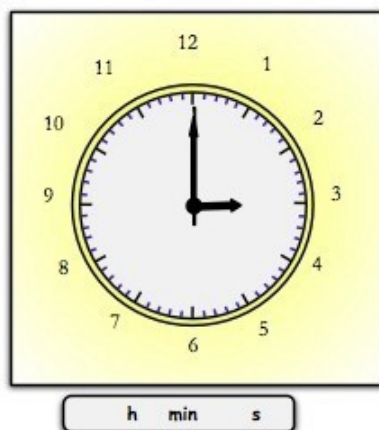
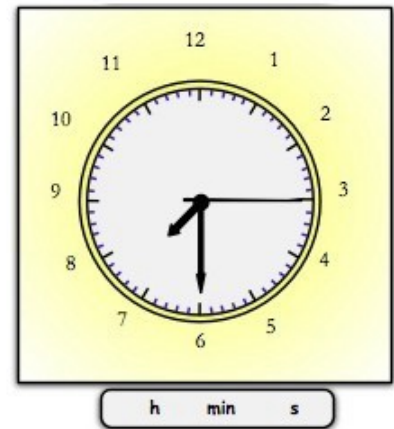
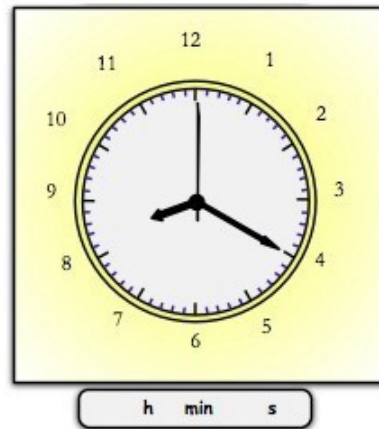
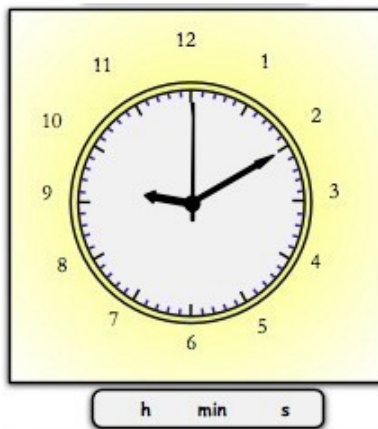
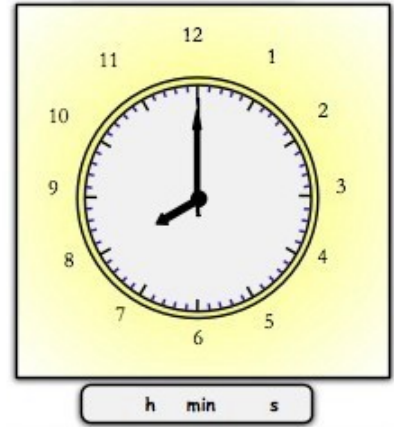
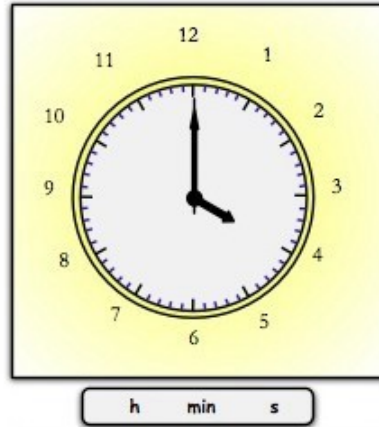
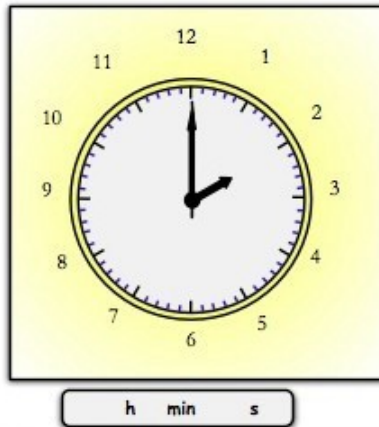


Il est neuf heures moins cinq.

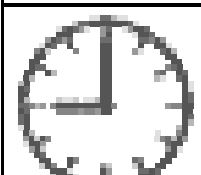
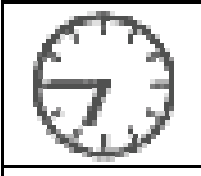
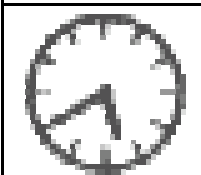
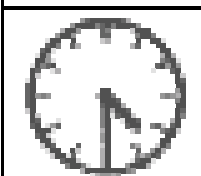
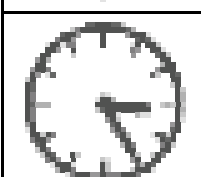
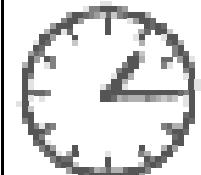
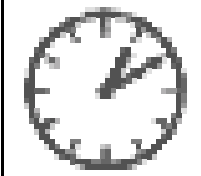
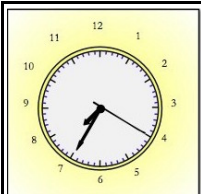


Il est neuf heures.

Quelle heure est-il ?



Quelle heure est-il?





[Empty rectangular box]

This document was created with Win2PDF available at <http://www.win2pdf.com>.
The unregistered version of Win2PDF is for evaluation or non-commercial use only.